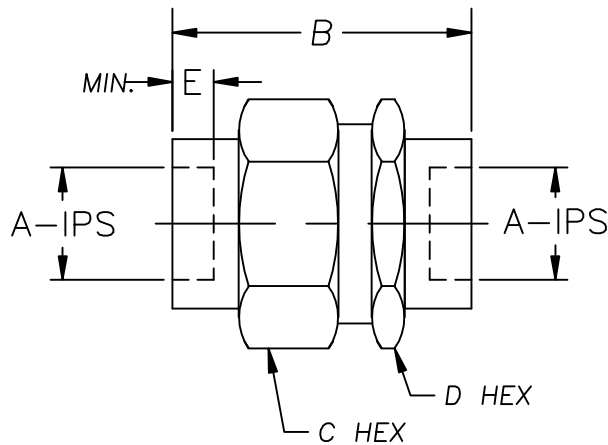


UNION – PIPE TO PIPE (WELD OR BRAZE)



MP300 SERIES

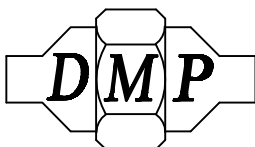
PART NO.	A IPS	B	C-HEX	D-HEX	E MIN
MP300-0	1/8	1 11/16	1 1/8	1 1/16	3/8
MP300-1	1/4	1 11/16	1 1/8	1 1/16	3/8
MP300-2	3/8	1 15/16	1 3/8	1 3/8	3/8
MP300-3	1/2	2 3/16	1 5/8	1 5/8	3/8
MP300-4	3/4	2 5/16	2"	1 13/16	1/2
MP300-5	1"	2 1/2	2 3/8	2 1/4	1/2
MP300-6	1 1/4	3"	3 1/4	3"	5/8
MP300-7	1 1/2	3"	3 1/4	3"	5/8

- STANDARD MATERIALS: STAINLESS STEEL, NICU, STEEL AND 70/30 CUNI. OTHER MATERIALS AVAILABLE UPON REQUEST. 3000 PSI WORKING PRESSURE.
- REDUCING FITTINGS AVAILABLE, CONSULT FACTORY.
- FOR TUBE (OD) SOCKET FITTINGS SEE SECTION MT300.
- METRIC SIZES AVAILABLE, CONSULT FACTORY.
- FOR ADDITIONAL INFORMATION SEE MP ENGINEERING DATA SHEETS.
- DIMENSIONS SUBJECT TO CHANGE WITHOUT NOTICE.

DERBYSHIRE MARINE PRODUCTS LLC, HARLEYSVILLE, PA 19438

TEL: 267-222-8900, FAX: 267-222-8865

Web: www.derbyshiremp.com



"GET THE CONNECTION"