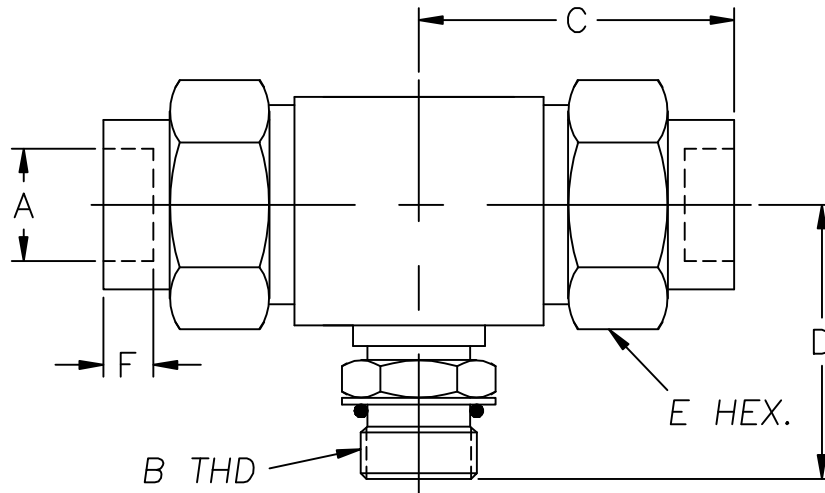


MALE BRANCH TEE – PIPE X PIPE X STR THD.



MP315 SERIES

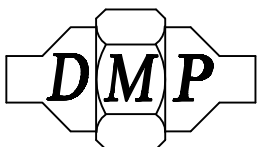
PART NO.	A IPS	B THD	C	D	E	F
MP315-1-1-4	1/4	7/16-20	2 1/16	1 11/16	1 1/8	3/8
MP315-2-2-6	3/8	9/16-18	2 1/4	1 15/16	1 3/8	3/8
MP315-3-3-8	1/2	3/4-16	2 3/8	2 1/16	1 5/8	3/8
MP315-4-4-12	3/4	1 1/16-12	3 1/16	2 3/16	1 5/8	1/2
MP315-5-5-16	1"	1 5/16-12	3 5/16	2 3/8	3 3/8	1/2
MP315-6-6-20	1 1/4	1 5/8-12	3 5/8	2 3/8	3 1/4	1/2
MP315-7-7-24	1 1/2	1 7/8-12	3 5/8	2 3/4	3 1/4	1/2

- STANDARD MATERIALS: STAINLESS STEEL, NICU, STEEL AND 70/30 CUNI. OTHER MATERIALS AVAILABLE UPON REQUEST. 3000 PSI WORKING PRESSURE.
- REDUCING FITTINGS AVAILABLE, CONSULT FACTORY.
- FOR TUBE (OD) SOCKET FITTINGS SEE SECTION MT315.
- METRIC SIZES AVAILABLE, CONSULT FACTORY.
- FOR ADDITIONAL INFORMATION SEE MT ENGINEERING DATA SHEETS.
- DIMENSIONS SUBJECT TO CHANGE WITHOUT NOTICE.

DERBYSHIRE MARINE PRODUCTS LLC, HARLEYSVILLE, PA 19438

TEL: 267-222-8900, FAX: 267-222-8865

Web: www.derbyshiremp.com



"GET THE CONNECTION"