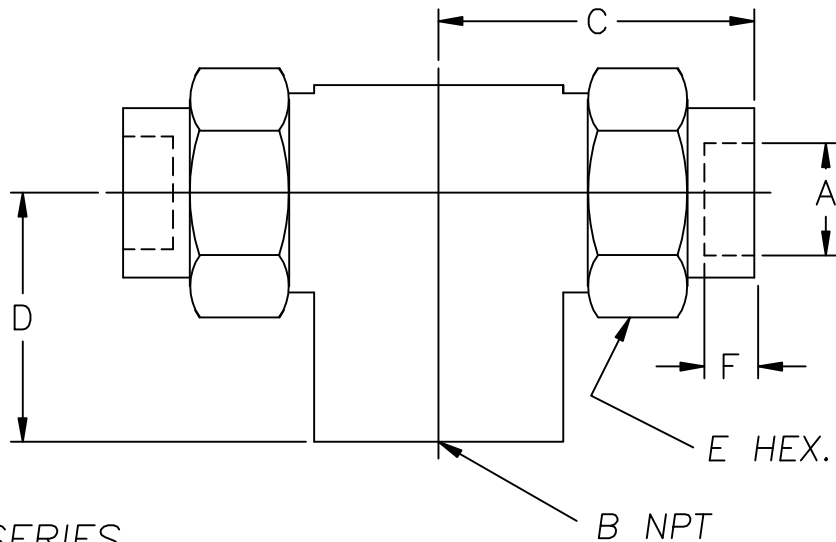


# MALE BRANCH TEE – TUBE X TUBE X MALE NPT



## MT313 SERIES

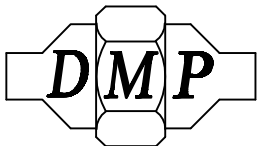
PART NO.	A OD	B NPT	C	D	E	F
MT313-4-4-2	1/4	1/8-27	1 3/16	13/16	5/8	3/16
MT313-6-6-4	3/8	1/4-18	1 1/2	1 1/16	13/16	1/4
MT313-8-8-6	1/2	3/8-14	1 11/16	1 3/16	15/16	5/16
MT313-10-10-8	5/8	1/2-14	2 1/16	1 7/16	1 1/8	3/8
MT313-12-12-12	3/4	3/4-14	2 1/4	1 9/16	1 3/8	7/16
MT313-16-16-12	1"	3/4-14	2 3/4	1 15/16	1 5/8	1/2
MT313-16-16-16	1"	1-11 1/2	3"	2 3/16	1 5/8	1/2
MT313-20-20-16	1 1/4	1-11 1/2	3 1/16	2 3/16	2"	9/16
MT313-20-20-20	1 1/4	1 1/4-11 1/2	3 1/4	2 3/8	2"	9/16
MT313-24-24-20	1 1/2	1 1/4-11 1/2	3 5/16	2 3/8	2 3/8	5/8

- STANDARD MATERIALS: STAINLESS STEEL, NICU, STEEL AND 70/30 CUNI.  
OTHER MATERIALS AVAILABLE UPON REQUEST.  
3000 PSI WORKING PRESSURE.
- REDUCING FITTINGS AVAILABLE, CONSULT FACTORY.
- FOR PIPE (IPS) SOCKET FITTINGS SEE SECTION MP313.
- METRIC SIZES AVAILABLE, CONSULT FACTORY.
- FOR ADDITIONAL INFORMATION SEE MT ENGINEERING DATA SHEETS.
- DIMENSIONS SUBJECT TO CHANGE WITHOUT NOTICE.

DERBYSHIRE MARINE PRODUCTS LLC, HARLEYSVILLE, PA 19438

TEL: 267-222-8900, FAX: 267-222-8865

Web: [www.derbyshiremp.com](http://www.derbyshiremp.com)



**"GET THE CONNECTION"**