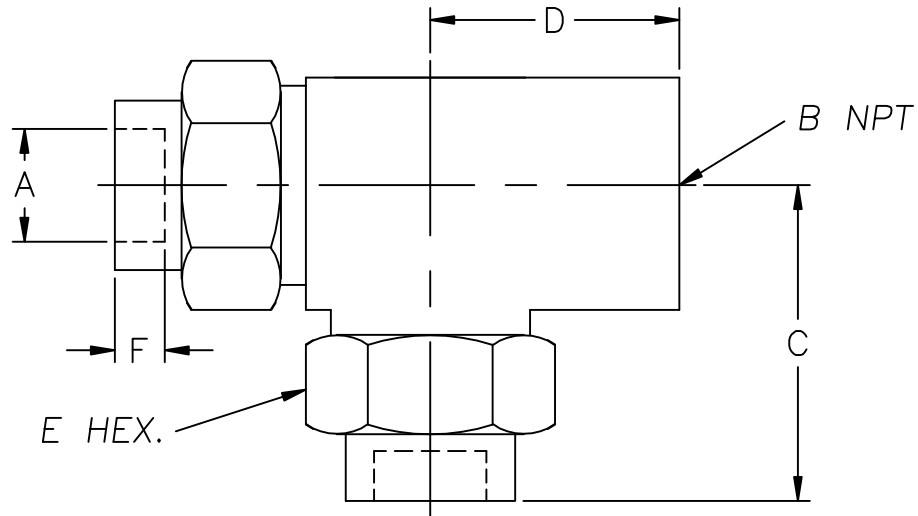


# MALE RUN TEE – TUBE X FEMALE NPT X TUBE



## MT314 SERIES

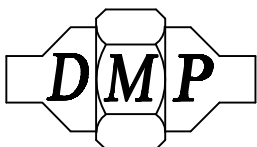
| PART NO.       | A OD  | B NPT        | C       | D      | E     | F    |
|----------------|-------|--------------|---------|--------|-------|------|
| MT314-4-4-4    | 1/4   | 1/4-18       | 1 3/16  | 1 1/16 | 13/16 | 3/16 |
| MT314-6-6-6    | 3/8   | 3/8-18       | 1 1/2   | 1 1/16 | 13/16 | 1/4  |
| MT314-8-8-8    | 1/2   | 1/2-14       | 1 11/16 | 1 3/16 | 15/16 | 5/16 |
| MT314-10-8-10  | 5/8   | 1/2-14       | 2 1/16  | 1 7/16 | 1 1/8 | 3/8  |
| MT314-12-12-12 | 3/4   | 3/4-14       | 2 1/4   | 1 9/16 | 1 3/8 | 7/16 |
| MT314-16-16-16 | 1"    | 1-11 1/2     | 2 3/4   | 2 3/16 | 1 5/8 | 1/2  |
| MT314-20-20-20 | 1 1/4 | 1 1/4-11 1/2 | 3 1/16  | 2 3/16 | 2"    | 9/16 |
| MT314-24-24-24 | 1 1/2 | 1 1/2-11 1/2 | 3 5/16  | 2 3/8  | 2 3/8 | 5/8  |

- STANDARD MATERIALS: STAINLESS STEEL, NICU, STEEL AND 70/30 CUNI. OTHER MATERIALS AVAILABLE UPON REQUEST. 3000 PSI WORKING PRESSURE.
- REDUCING FITTINGS AVAILABLE, CONSULT FACTORY.
- FOR PIPE (IPS) SOCKET FITTINGS SEE SECTION MP314.
- METRIC SIZES AVAILABLE, CONSULT FACTORY.
- FOR ADDITIONAL INFORMATION SEE MT ENGINEERING DATA SHEETS.
- DIMENSIONS SUBJECT TO CHANGE WITHOUT NOTICE.

DERBYSHIRE MARINE PRODUCTS LLC, HARLEYSVILLE, PA 19438

TEL: 267-222-8900, FAX: 267-222-8865

Web: [www.derbyshiremp.com](http://www.derbyshiremp.com)



**"GET THE CONNECTION"**