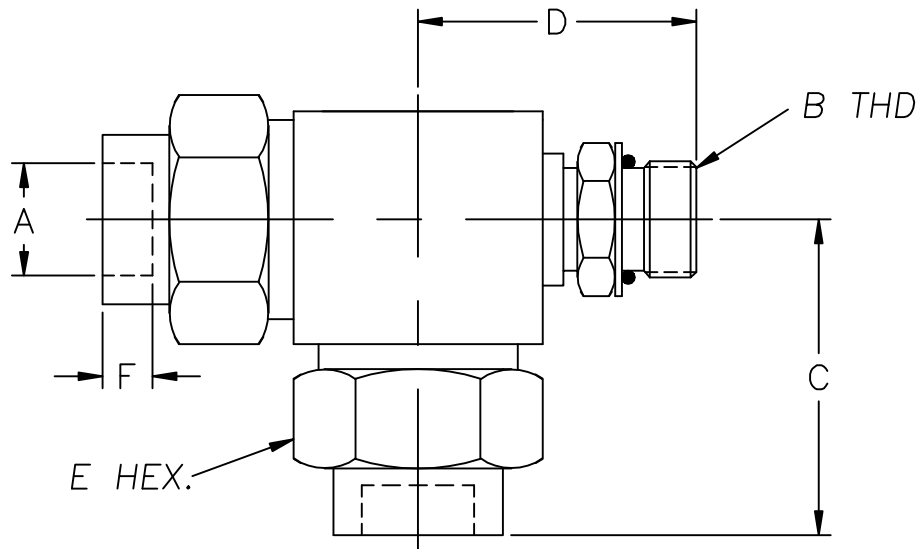


MALE RUN TEE – TUBE X STR. THD. X TUBE



MT316 SERIES

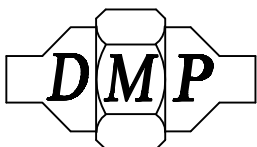
PART NO.	A OD	B THD	C	D	E	F
MT316-4-4-4	1/4	7/16-20	1 3/16	1 1/8	5/8	3/16
MT316-6-6-6	3/8	9/16-18	1 1/2	1 1/4	13/16	1/4
MT316-8-8-8	1/2	3/4-16	1 11/16	1 7/16	15/16	5/16
MT316-10-10-10	5/8	7/8-14	2 1/16	1 11/16	1 1/8	3/8
MT316-12-12-12	3/4	1 1/16-12	2 1/4	1 15/16	1 3/8	7/16
MT316-16-16-16	1"	1 5/16-12	2 3/4	2 1/16	1 5/8	1/2
MT316-20-20-20	1 1/4	1 5/8-12	3 1/16	2 3/16	2"	9/16
MT316-24-24-24	1 1/2	1 7/8-12	3 5/16	2 3/8	2 3/8	5/8

- STANDARD MATERIALS: STAINLESS STEEL, NICU, STEEL AND 70/30 CUNI. OTHER MATERIALS AVAILABLE UPON REQUEST. 3000 PSI WORKING PRESSURE.
- REDUCING FITTINGS AVAILABLE, CONSULT FACTORY.
- FOR PIPE (IPS) SOCKET FITTINGS SEE SECTION MP316.
- METRIC SIZES AVAILABLE, CONSULT FACTORY.
- FOR ADDITIONAL INFORMATION SEE MT ENGINEERING DATA SHEETS.
- DIMENSIONS SUBJECT TO CHANGE WITHOUT NOTICE.

DERBYSHIRE MARINE PRODUCTS LLC, HARLEYSVILLE, PA 19438

TEL: 267-222-8900, FAX: 267-222-8865

Web: www.derbyshiremp.com



"GET THE CONNECTION"