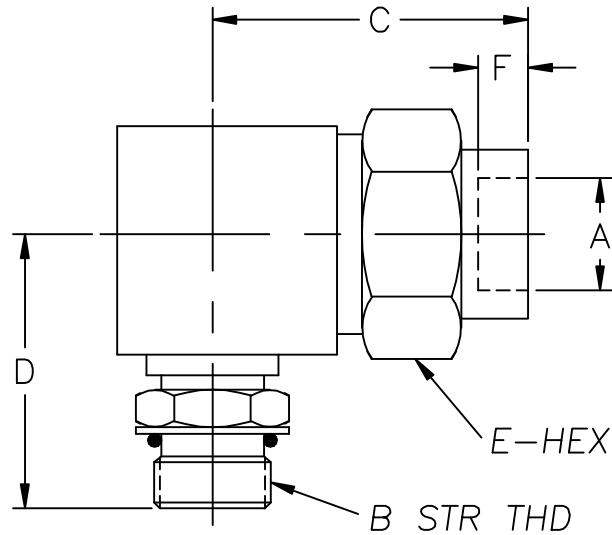


UNION ELBOW- TUBE X STRAIGHT THREAD



MT323 SERIES

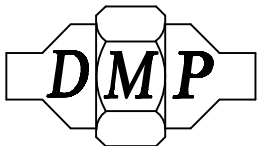
| PART NO. | A OD | B STR THD | C | D | E-HEX | F |
|----------|-------|-----------|---------|---------|-------|------|
| MT323-4 | 1/4 | 7/16-20 | 1 3/16 | 1 1/8 | 5/8 | 3/16 |
| MT323-6 | 3/8 | 9/16-18 | 1 1/2 | 1 1/4 | 13/16 | 1/4 |
| MT323-8 | 1/2 | 3/4-16 | 1 11/16 | 1 7/16 | 15/16 | 5/16 |
| MT323-10 | 5/8 | 7/8-14 | 2 1/16 | 1 11/16 | 1 1/8 | 3/8 |
| MT323-12 | 3/4 | 1 1/16-12 | 2 1/4 | 1 15/16 | 1 3/8 | 7/16 |
| MT323-16 | 1" | 1 5/16-12 | 2 3/4 | 2 1/16 | 1 5/8 | 1/2 |
| MT323-20 | 1 1/4 | 1 5/8-12 | 3 1/16 | 2 3/16 | 2" | 9/16 |
| MT323-24 | 1 1/2 | 1 7/8-12 | 3 5/16 | 2 3/8 | 2 3/8 | 5/8 |

- STANDARD MATERIALS: STAINLESS STEEL, NICU, STEEL AND 70/30 CUNI.
OTHER MATERIALS AVAILABLE UPON REQUEST.
3000 PSI WORKING PRESSURE.
- REDUCING FITTINGS AVAILABLE, CONSULT FACTORY.
- FOR PIPE(IPS) SOCKET FITTINGS SEE SECTION MP323.
- METRIC SIZES AVAILABLE, CONSULT FACTORY.
- FOR ADDITIONAL INFORMATION SEE MT ENGINEERING DATA SHEETS.
- DIMENSIONS SUBJECT TO CHANGE WITHOUT NOTICE.

DERBYSHIRE MARINE PRODUCTS LLC, HARLEYSVILLE, PA 19438

TEL: 267-222-8900, FAX: 267-222-8865

Web: www.derbyshiremp.com



"GET THE CONNECTION"